

RG-BC5912T

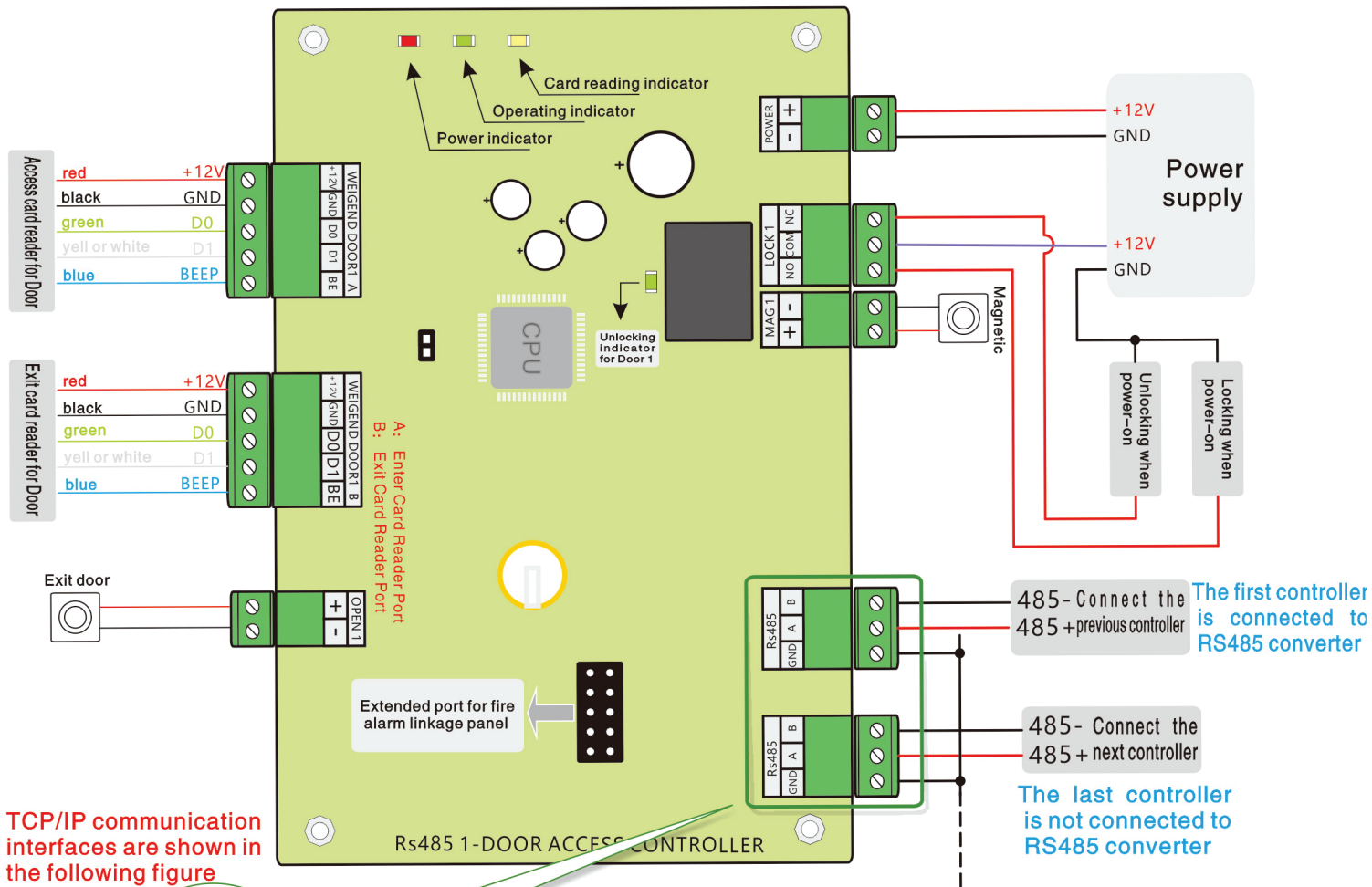
Single Door Access Control Board



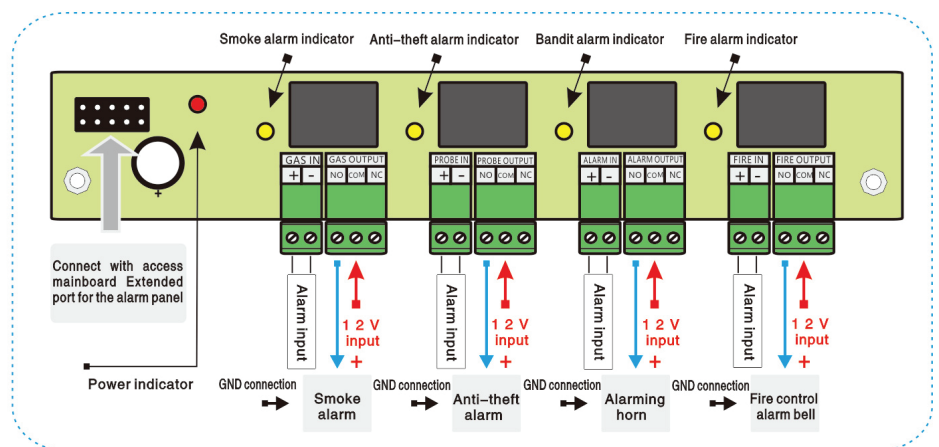
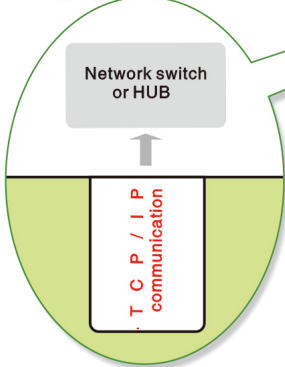
Working Voltage	DC9V ~ 14V
Working Current	<300mA
Temperature	0°C ~ 70°C
Humidity	10 ~ 90% RH
Door Control	1
Readers	2
Exit Button	1 Group
Door Sensor Interface	1 Group
Relay	1 Group
Alarm Extension	4 Enter and 4 Exit (Fire, bandit, burglar, gas alarm)
Reading Protocol	Wiegand 26 / 34 / 66
Register Cards	42,000 (Can be extended)
Record Capacity	200,000 (Can be extended)
Communication Type	TCP / IP
Communication Distance	TCP / IP (100m)
Wiegand	100m (suggest 80m)
Size	157 x 130 x 20mm

RG-BC5912T

Single Door Access Control Board



TCP/IP communication interfaces are shown in the following figure



Note

- ▼ Correct wire connection of locks that are closed when power-on (such as electric bolt lock or magnetic lock): the anode of the electric control lock is connected to NC of the input terminal of the controller, the cathode is connected to GND of the power supply and the COM is connected to +12V of the power supply.
- ▼ Correct wire connection of locks that are unlocked when power-on (such as electric control lock or cathode lock): the anode of the electric control lock is connected to NO of the input terminal of the controller, the cathode is connected to GND of the power supply and the COM is connected to +12V of the power supply.