



# G-L400

Ranger Sliding Motor with Oil Bath  
(Magnet Type - 24T Gear)



**RANGER**  
AUTOMATION • REVOLUTION



Soft Start and Soft Stop

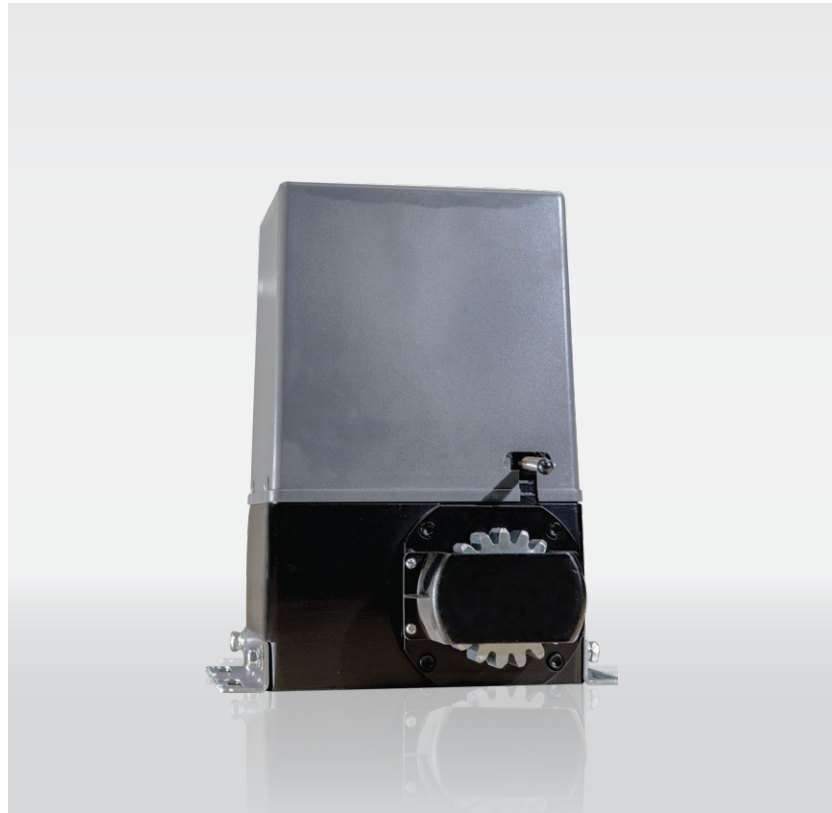


Auto Reverse on Obstacle Detection

**1,500 KG**

Gate Support Weight Up to 1,500 KG

\*All image and specification is subject to change without prior notice.



Technical Data	G-L400
Power Supply	220V 50Hz
Output Rotation Speed	24T
Opening Speed	14m/min
Output Torque	30 N.m
Max Gate Weight	1500 KG
Ambient Temperature	-20°C~+50°C
Protection Class	IP44

## Standard Colours



Nova Grey  
(Similar to RAL7016)



Jet Black Aluminium  
(Similar to RAL9005)

## Ordering Info

Model	Limit Switch Type
G-L400	Magnet Limit Switch Type Motor
G-L400	

