

# RG-AT100S/D

Ranger Domestic Sliding Door Operator

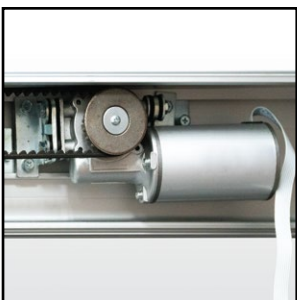


RANGER



Ranger automatic sliding door operator are easy installed, durable, reliable performance, safe and low noise operation. You can transform your any door rapidly into an automatic sliding door without complication. Range automatic sliding door operator also able to increase convenience and provide barrier-free access for the disabled too.

Ranger automatic sliding door operator highly recommend for application at your living space, working environment etc to make your place more securely.



### Brushless Motor

Adopting brushless motor with a long service life & larger torque.



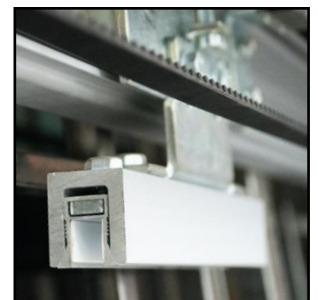
### Built-in Control Unit

Easy adjust sliding door precision move according door size & weight.



### Reliability

High reliability synchronous belt, drive door forward and backward with help of hanger.



### Stable

Adjustable door hanger and clamp type door support even heavier glass door with smooth operation on the railway.



# RG-AT100S/D

## Ranger Domestic Sliding Door Operator



**RANGER**



### Multilock Function

Two door interlocking and electric lock function with support multiple access control systems.



### Low Noise Operation

Low noise design, less than 55 decibels, quiet operation and smooth operation.

**KG**  
**120**

### Maximum Door Weight

Maximum support door weight up to 120KG.

\*All image and specification is subject to change without prior notice.



Technical Data	RG-AT100S-3	RG-AT100D-4	RG-AT100D-5	RG-AT100D-6
Length of Rail	3.2M (Single)	4.2M (Single / Double)	5.0M (Single / Double)	6.0M (Single / Double)
Door Configuration	Single		Double	
Door Leaf Weight	≤ 1 x 120kg		≤ 2 x 100kg	
Width of Door Leaf	700-1300mm		600-1200mm	
Width of Door Opening	1350-2400mm		2300-4800mm	
Method of Installation	Surface Installation			
Supply Power Voltage	AC 110-220V +/- 10%, 50-60hZ			
Opening Speed	150-460mm/s (Adjustable)			
Closing Speed	130-460mm/s (Adjustable)			
Door Hold Open Time	0~8s (Adjustable)			
Manual Force	<40N		<50N	
Motor	DC 24V, 65W (DC, Brushless)			
Environment Temp.	-20°C ~ +50°C			

### Standard Colours

White Aluminium  
(Similar to RAL9003)

### Ordering Info

Model	Door Configuration	Length of Rail
RG-AT100S-3	Single	3.2M
RG-AT100D-4	Single / Double	4.2M
RG-AT100D-5	Single / Double	5.0M
RG-AT100D-6	Single / Double	6.0M

RG-AT100S/D SINGLE/DOUBLE, 3.2M (SINGLE ONLY)/4.2M/5.0M/6.0M



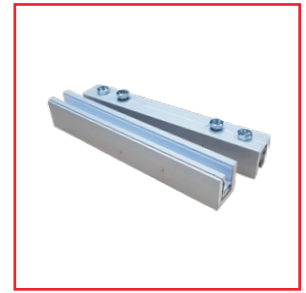
Wireless Push Button



Microwave/Infrared Sensor



Safety Beam Sensor



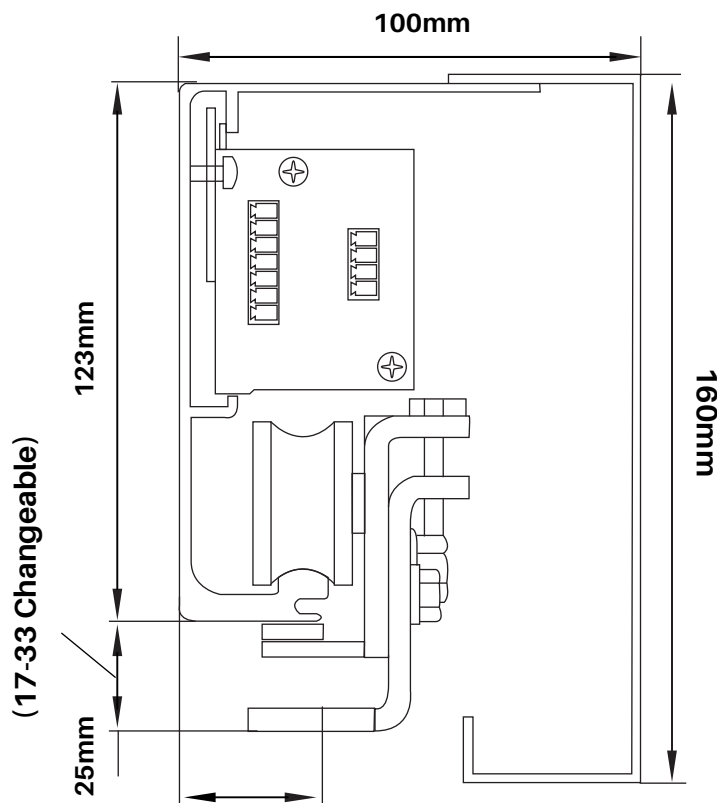
Glass Clamp



Drop Bolt Lock



Battery Pack



To the centre of hanging door leaf  
(25-40 changeable)

Model A

