

BATTERY-12/200AH

Specifications

Nominal Voltage		12 V
Capacity (25°C)	10HR(10.8V)	200 Ah
	5HR(10.5V)	175Ah
	1HR(9.60V)	125Ah
Dimension	Length	522 ± 2mm (20.55inch)
	Width	238 ± 2mm (9.37inch)
	Height	218 ± 2mm (8.58inch)
	Total Height	T5: 238 ± 2mm (9.37inch) T11: 221 ± 2mm (8.70inch)
Approx. Weight		61kg (134.5lbs) ± 4%
Terminal type		T5/T11
Internal resistance (Fully charged, 25°C)		Approx. 3mΩ
Capacity affected by temperature (10HR)	40°C	102%
	25°C	100%
	0°C	85%
	-15°C	65%
Self-discharge (25°C)	3 month	Remaining Capacity: 91%
	6 month	Remaining Capacity: 82%
	12 month	Remaining Capacity: 65%
Nominal operating temperature		25°C ± 3°C (77°F ± 5°F)
Operating temperature range	Discharge	-15°C ~ 50°C (5°F ~ 122°F)
	Charge	-10°C ~ 50°C (14°F ~ 122°F)
	Storage	-20°C ~ 50°C (-4°F ~ 122°F)
Float charging voltage(25°C)		13.50 to 13.80V Temperature compensation: -18mV/°C
Cyclic charging voltage(25°C)		14.50 to 14.90V Temperature compensation: -30mV/°C
Maximum charging current		60A
Terminal material		Copper
Maximum discharge current		1600A(5 sec.)
Designed floating life(20°C)		7~10 years

- ◆ Absorbent glass mat technology;
- ◆ Recognized by UL & CE;
- ◆ ABS container.

Constant Current Discharge Characteristics (A, 25°C)

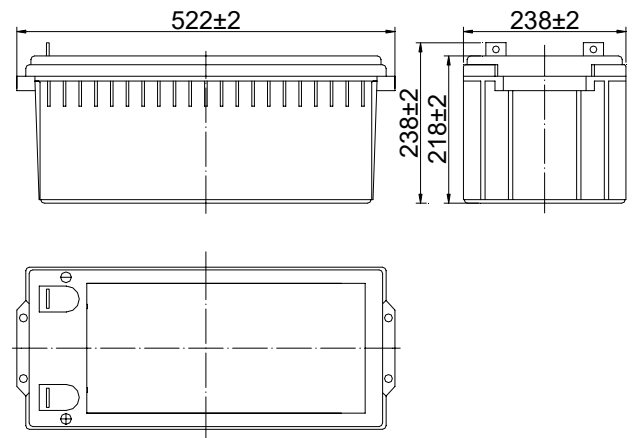
F.V/TIME	15min	30min	60min	2h	3h	4h	5h	6h	8h	10h	20h
9.60V	333	202	125	73.1	51.0	41.8	35.7	31.2	24.5	20.4	10.7
9.90V	325	198	123	72.6	50.7	41.6	35.5	31.0	24.3	20.3	10.7
10.2V	313	192	120	72.0	50.4	41.3	35.2	30.8	24.2	20.3	10.6
10.5V	303	187	118	70.9	50.0	41.0	35.0	30.6	24.0	20.1	10.6
10.8V	287	180	114	69.1	48.5	39.8	34.0	29.7	23.3	20.0	10.5

Constant Power Discharge Characteristics (Watt, 25°C)

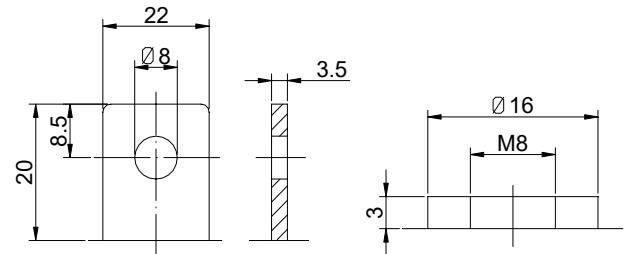
F.V/TIME	15min	30min	60min	2h	3h	4h	5h	6h	8h	10h	20h
9.60V	3660	2266	1428	846	600	492	422	369	291	243	128
9.90V	3572	2221	1406	841	596	489	419	367	289	243	128
10.2V	3440	2153	1371	834	592	486	417	364	287	242	128
10.5V	3323	2101	1343	821	588	482	414	362	285	240	127
10.8V	3147	2024	1302	800	570	468	401	351	277	239	126

Note: The above characteristics data can be obtained within three charge/discharge cycles.

Dimensions



Terminal



Terminal T5

Terminal T11